



Strong to Severe Thunderstorms Through Tuesday Night

May 9, 2023

12:46 PM

Primary Hazards: Large Hail and Damaging Wind Gusts

Key Messages

- Strong to severe thunderstorms will occur through Tuesday evening & overnight
- Large hail up to the size of golf balls and damaging winds are the primary hazards. Some storms may produce hail up to 2"

Severe Threats



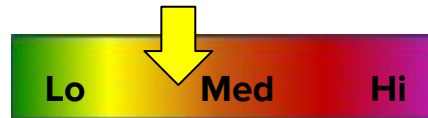
Tornado



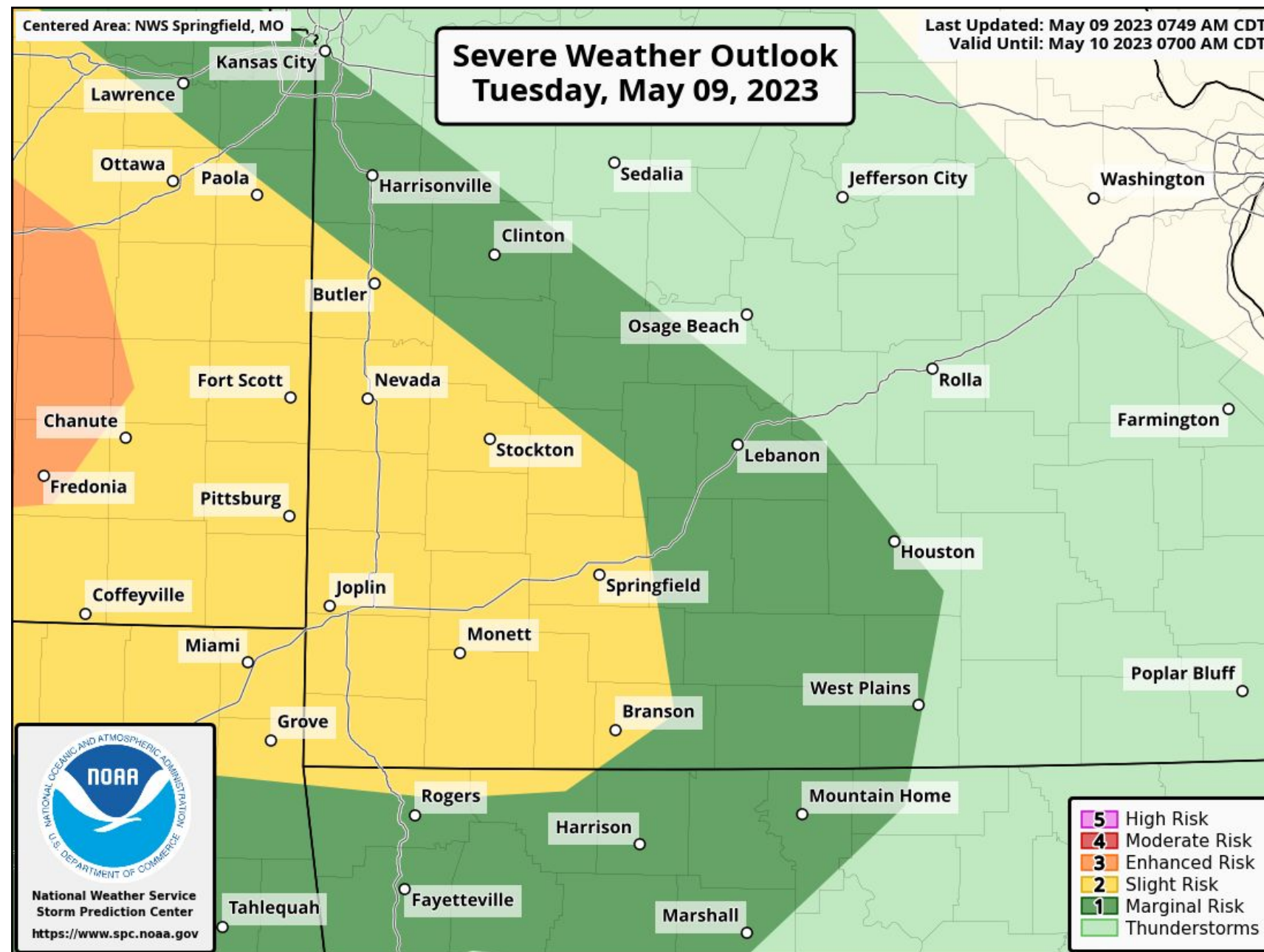
Hail



Wind



Flooding

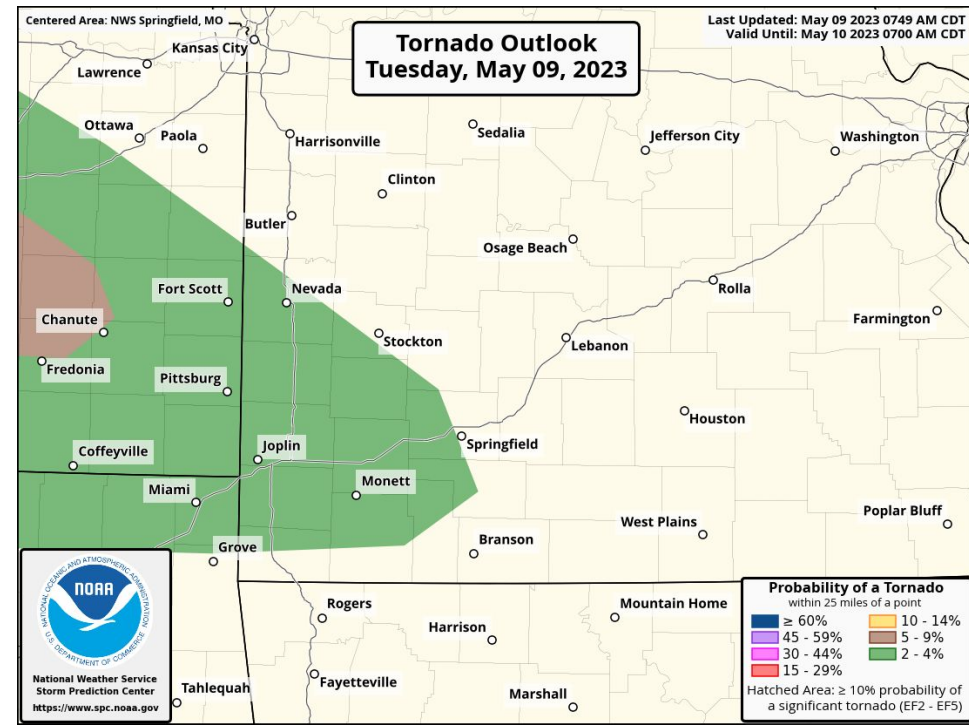
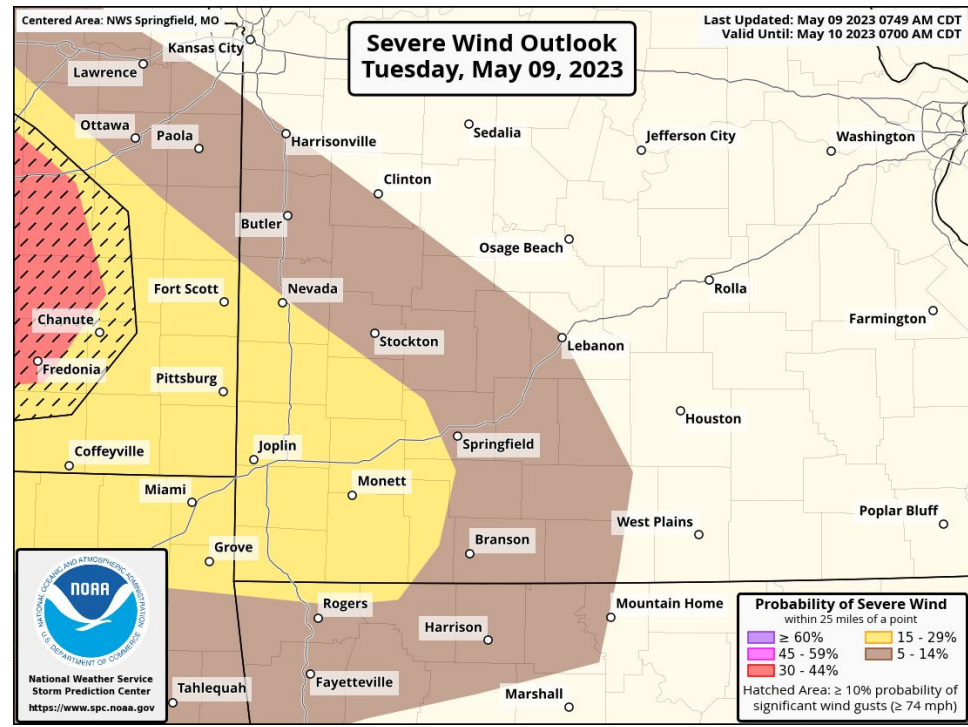
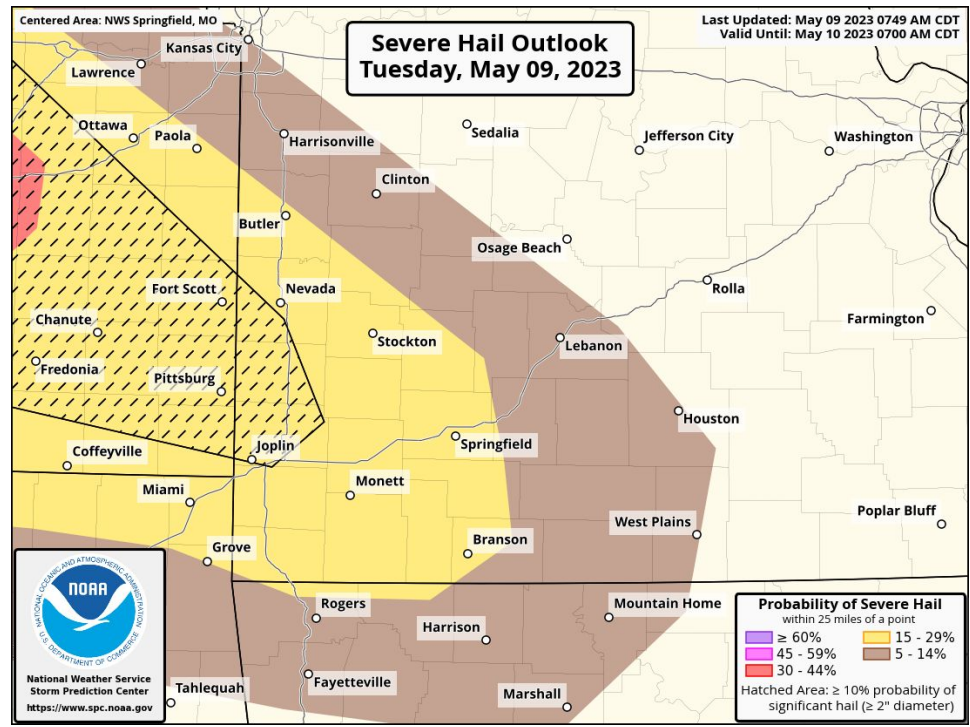




Hazard Probabilities

May 9, 2023
12:46 PM

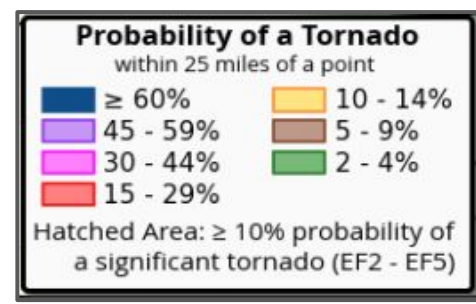
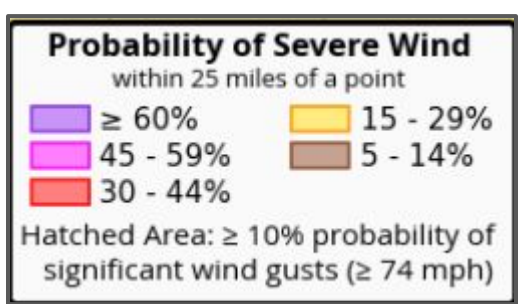
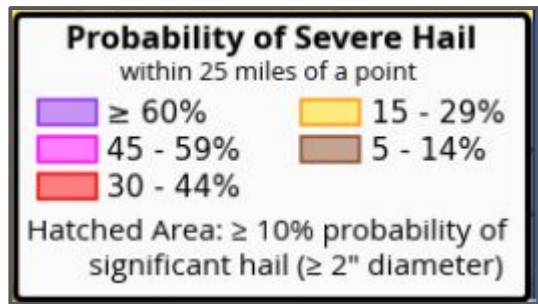
Primary Hazards: Large Hail and Damaging Wind Gusts



Hail Probability

Wind Probability

Tornado Probability

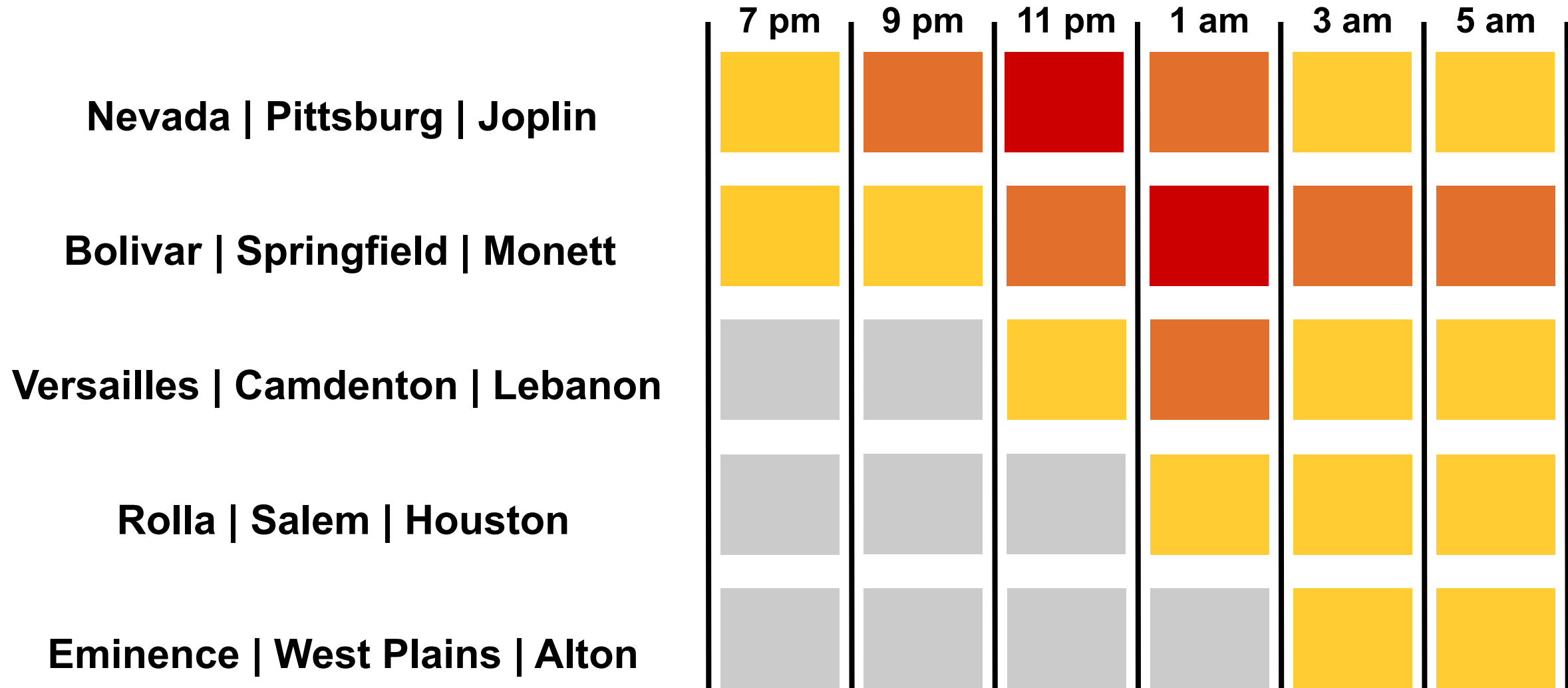




Estimated Thunderstorm Timeline

May 9, 2023
12:46 PM

This Evening and Overnight



Thunderstorm Chances

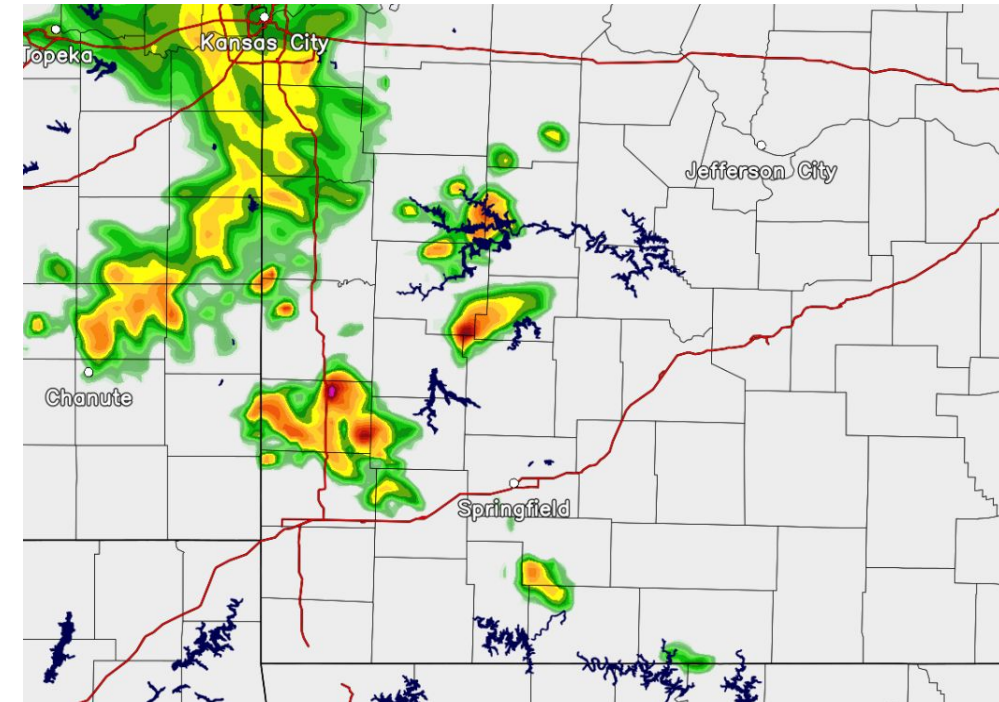




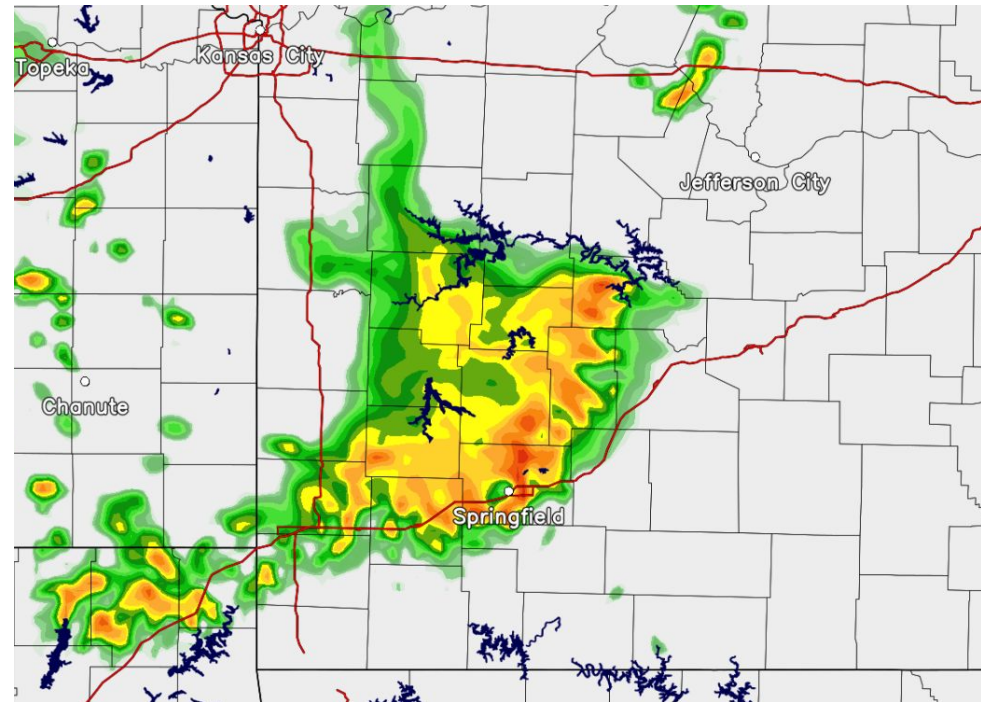
Model Timeline of Storms Tonight

May 9, 2023
12:46 PM

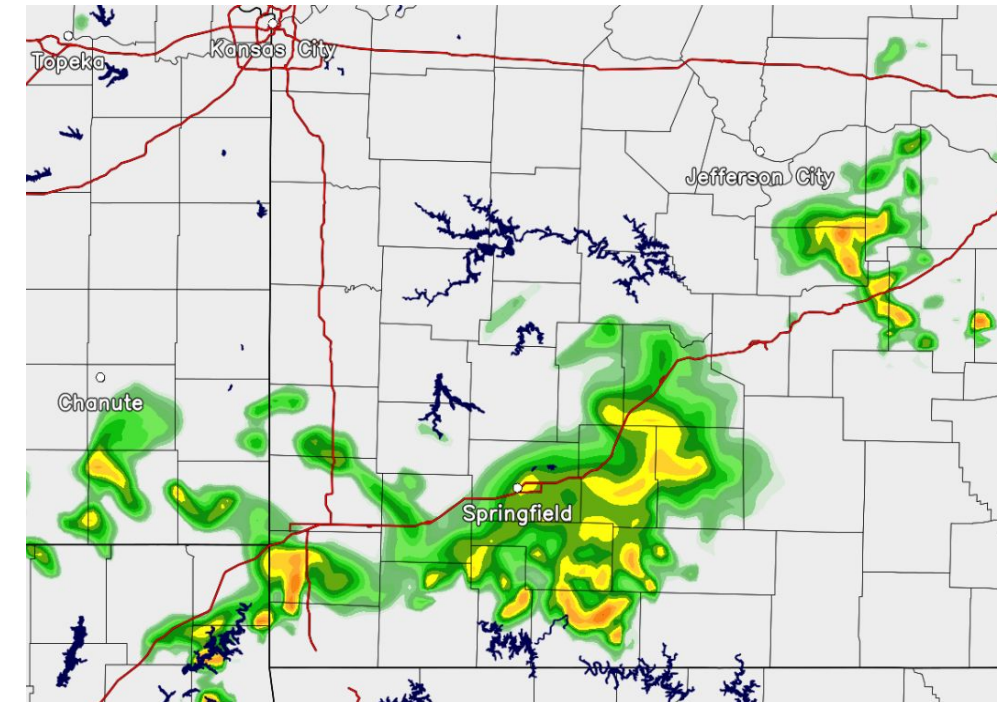
Forecast Radar - 9pm



Forecast Radar - 12am



Forecast Radar - 3am



Key Takeaways →

- This is one model depiction and does not portray the exact timing and location of storms, but provides a general idea.
- Storms are expected to begin moving into our southeast Kansas counties around 8pm.





For Additional Information

- [NWS Springfield Webpage](#)
- [IDSS Point Forecasts](#)
- [Graphical Hazardous Weather Outlook](#)
- [SPC Convective Outlooks](#)
- [Submit Storm Reports](#)

Thunderstorms can escalate quickly.

Clear skies can quickly turn dark and ominous, whether due to pop-up thunderstorms or squall lines. Be prepared!



Set up a way to get weather warnings on your phone



When alerted to a storm, get inside a sturdy building immediately



Stay away from windows once indoors



If a building isn't nearby, get inside a vehicle



weather.gov



Follow @NWSSpringfield

